

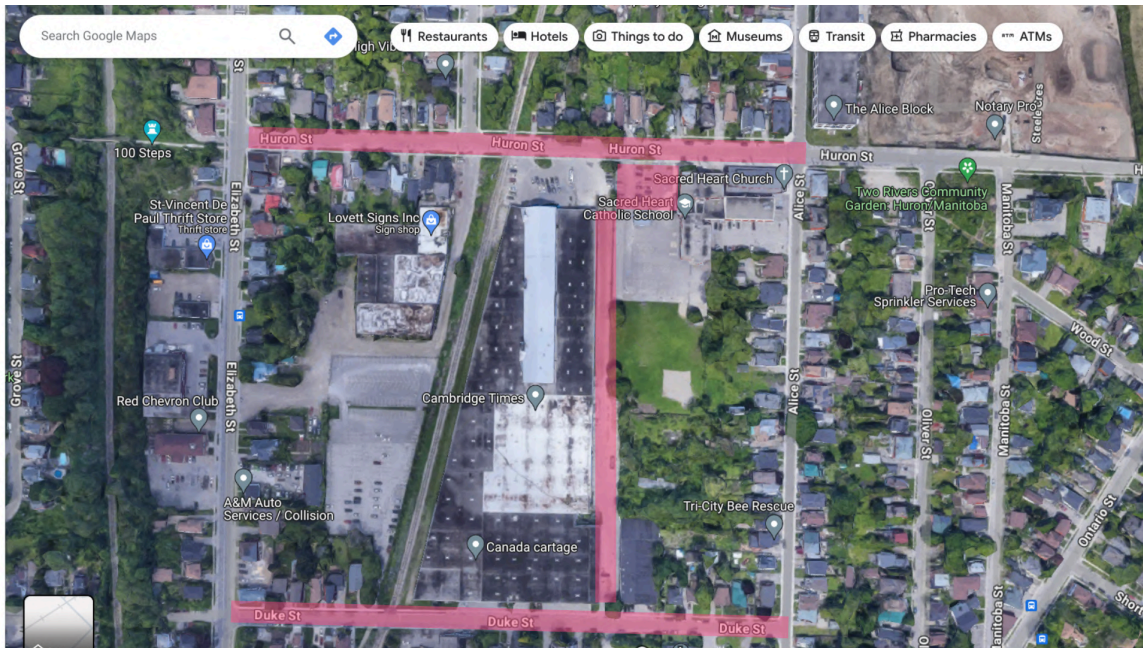


# Sleeman Centre (Guelph)

## Parking Directions

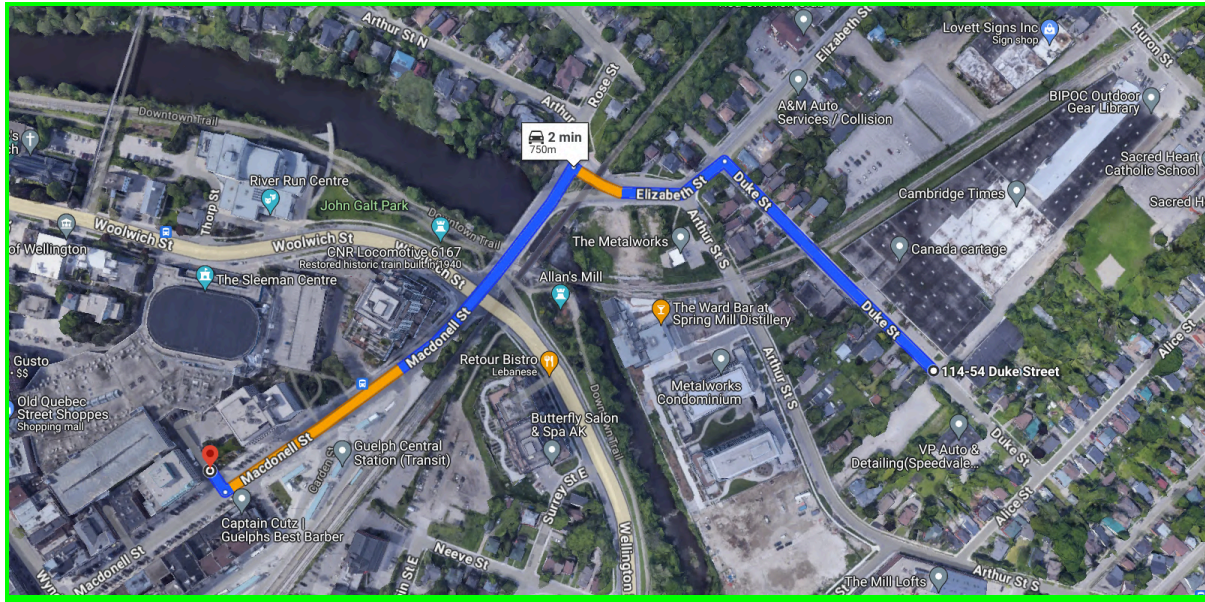
\*Parking downtown Guelph has become very challenging. We've made a deal with a nearby industrial building to park on the right side of the building. We are not 100% sure if the parking area will accommodate all of the vendor vehicles so we've highlighted additional areas that can be used for parking.

- 1) 68 Duke Street - Industrial building parking lane (we've acquired approval from the building).
- 2) Duke Street - Parking free and unlimited on weekends (please double check city signage).
- 3) Sacred Heart Catholic School - 125 Huron St, Guelph, ON N1E 5L5 (School is closed on weekends).
- 4) Huron Street - Parking free and unlimited on weekends (please double check city signage).

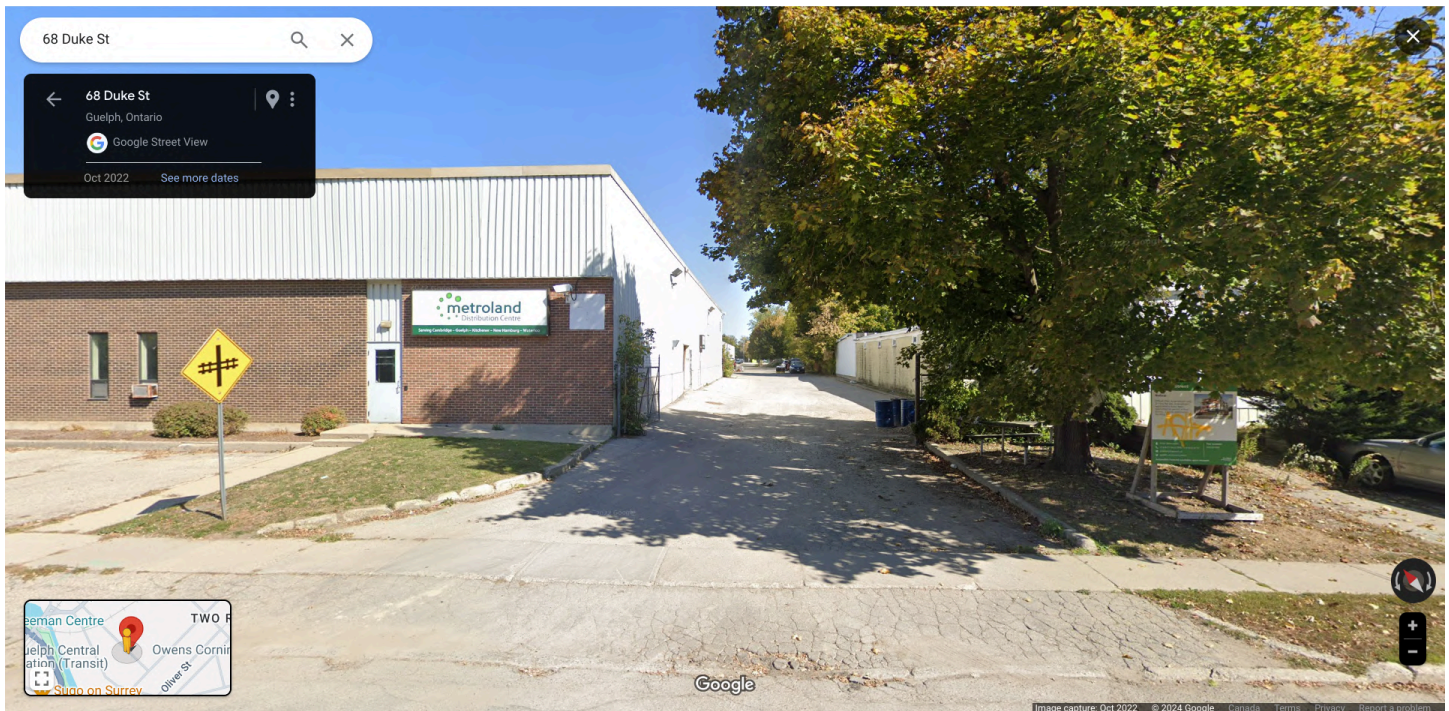




Parking Lot Address: **68 Duke St, Guelph, ON N1E 5L2**



1. Head southeast toward Macdonell St (20 Meters)
2. Turn left onto Macdonell St (350 Meters)
3. Turn right onto Elizabeth St (140 Meters)
4. Turn right onto Duke St (230 Meters)



If you have any questions or concerns, please reach out to [Haben@iheartbeer.ca](mailto:Haben@iheartbeer.ca)